

GrooveTransporter II Complete Car Kit

Quick Start Guide:



Made for
iPod

Cygnett. 

Warranty

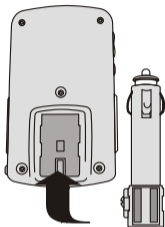
Cygnett 1 Year Manufacturers Warranty
Register online at www.cygnett.com to activate your warranty.

Thank you for purchasing Cygnett's GrooveTransporter FM Transmitter & Dock with remote. Now you can broadcast your iPod tunes to your car stereo.

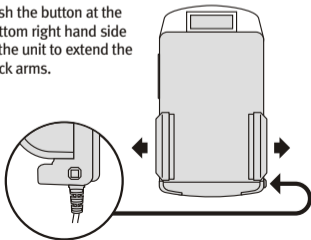
Getting Started	2
Connecting to iPods.	3
Connecting to PDAs/Mobiles.	4
Connecting to MP3/MP4 players	5
Adjusting the position.	6
Tuning	7
Hot Tips	8
Using the remote	9

Step 1

- A) Slide and Click in the removable car cigarette adaptor into the back of the unit.

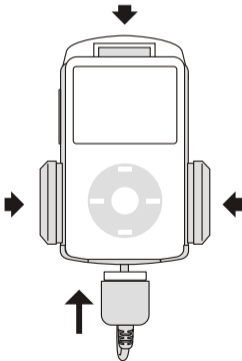


- B) Push the button at the bottom right hand side of the unit to extend the dock arms.



For iPods

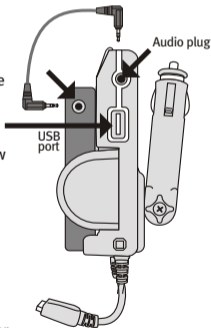
Attach the connector at the base of your GrooveTransporter to your iPod. Place your iPod between the arms and simultaneously squeeze the arms until they hold your iPod in a snug position.



For PDAs/Mobiles*

- A) Attach the supplied 3.5mm to 2.5mm audio cable from the audio out plug on the PDAs/Mobile into the Audio in plug on the top right hand side of the GrooveTransporter.

- B) To charge your PDA/mobile via the GrooveTransporter, connect the USB cable received with your PDA/mobile into the USB port on the top right of the unit (below the audio plug).

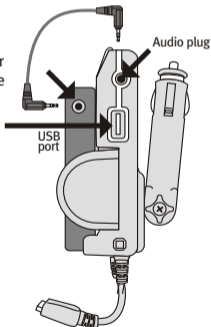


*Mobiles with 2.5mm or 3.5mm audio outputs compatible.

For other MP3/MP4 players

- A) Attach the supplied 3.5mm audio cable from the audio out plug on the mp3 Player into the Audio in port on the top right hand side of the GrooveTransporter.

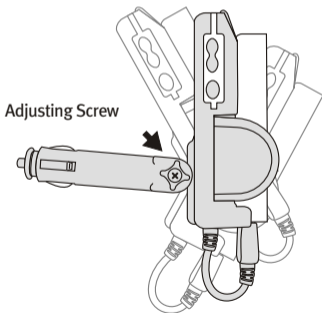
- B) To charge your MP3/MP4 Player via the GrooveTransporter connect the USB cable received with your player into the USB port on the top right of the unit (below the audio plug).



Adjusting the position

Step 2

Loosen the adjusting screw and insert the arm into your car cigarette lighter. Push gently until it is fully inserted. Adjust the dock to achieve the best angle and tighten the screw to secure this position. Your iPod will indicate that it is charging when the car ignition is on.

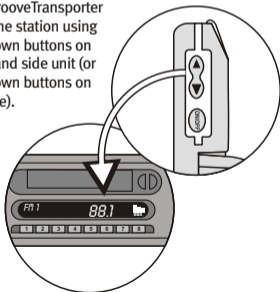


Step 3

Turn the GrooveTransporter on via the on/off switch on the left hand side of the unit (or the POWER button on the remote).

Select a clear (unused) frequency on your car fm radio. The ideal frequency will have only have static with static also on neighbouring channels.

Set the GrooveTransporter to the same station using the up/down buttons on the left hand side unit (or the up/down buttons on the remote).



Step 3 cont.

You can view the frequency selection via the backlit LCD screen, or your iPod screen if using an iPod.

Ensure your car radio volume is turned up to the desired level and control your iPod as usual.

The GrooveTransporter will automatically memorise the last FM frequency used and will set to that frequency when the GrooveTransporter is turned on again.



- **Adjusting the volume on your iPod may help reduce static or distortion on some frequencies.**
- **Reception varies in different areas, try alternative frequencies to determine the best quality transmission**
- **Adjust the backlight on your iPod to 'Always On' to receive the strongest FM signal. Please refer to your iPod manual on how to do this.**

Step 4

You can use the Remote to control your iPod from anywhere in the car. The remote gives you the same access functions as your iPod.

- 1) **POWER** – press to turn the GrooveTransporter on or off
- 2) **MENU** – accesses your iPod menu
- 3) (↑) (↓) - use to navigate options on your iPod menu
- 4) **REPEAT** – Allows you to repeat songs
- 5) **SELECT** – Use to select options on your iPod menu
- 6) **SHUF** - Shuffle your iPod tracks
- 7) **FM FREQ** – Use to view the FM frequency on your backlit iPod screen
- 8) **▶||** Press to access your iPod music or to pause
- 9) **◀◀ & ▶▶** Use to forward/back tracks



This device complies with Part 15 of FCC Rules. Operation is subject to the following conditions:

- (1) This device may not cause harmful interference, and
- (2) This device must accept any interference that may cause undesired operation.
- (3) This equipment may be operated in GB.

Hereby, Cygnett declares that this FM Transmitter is in compliance with the essential requirements & other relevant provisions of Directive 1999/5/EC. The Declaration of Conformity may be consulted at <http://www.cygnett.com/pages/support.htm>

Serial No:
200907



CE 0560 



For product support, check the latest instructions & updates in the Support Section of our website:
www.cygnett.com or email us at info@cygnett.com

Cygnett.

©2007 Cygnett

www.cygnett.com

iPod is a trademark of Apple, Inc., registered in the U.S. and other countries.